

SPECIFICATIONS

Current Rating : 1 Amp.

Withstanding Voltage : AC 500V R.M.S.

Insulation Resistance : 1000 Megohms Minimum
At DC 500V.

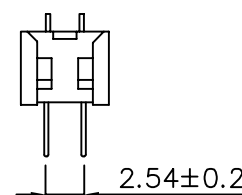
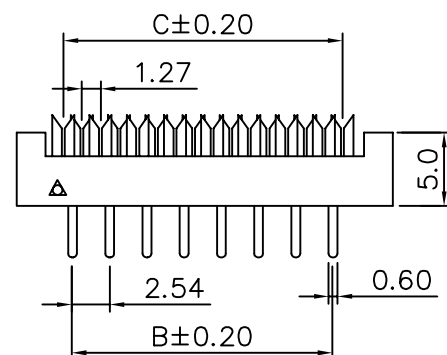
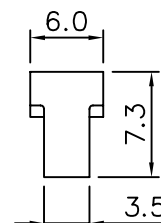
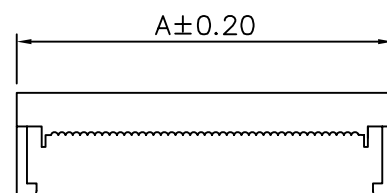
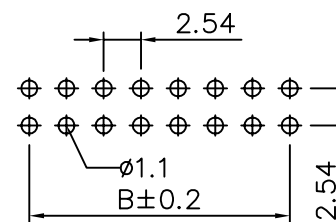
Contact Resistance : 15 Milliohms Maximum.

Operating Temperature : -40°C~105°C.

Insulator : PBT+30% Glass Fiber(UL94V-0),Black

Contact : Phosphor Bronze Or Brass

Gold Or Tin Over Nickel.



No.Of Contacts	Dim A	Dim B	Dim C
8	15.61	7.62	8.80
10	18.15	10.16	11.34
12	20.69	12.70	13.88
14	23.23	15.24	16.42
16	25.77	17.78	18.96
18	28.31	20.32	21.50
20	30.85	22.86	24.04
24	35.93	27.94	29.12
26	38.47	30.48	31.66
30	43.55	35.56	36.74
34	48.63	40.64	41.82
36	51.17	43.18	44.36
40	56.25	48.26	49.44
50	68.95	60.96	62.14
60	81.65	73.66	74.74
64	86.73	78.74	79.92