



普傑國際股份有限公司

PROFESSOR TECHNOLOGY CO., LTD.

PRODUCT SPECIFICATION

產品承認書

Customer: _____

Product Name: Active GPS Antenna

Model No: CPG11H

Production Region: TAIWAN

Version: English

Customer Approval Stamp.

Date: __ / __ / __.

Contact Info: Jimmy Chan
+886-3-4551081 ext:209
jack@professor.com.tw
jimmychan@professor.com.tw

Model No:
CPG11H

Date:
19/Jan/2005

Checked by:

Approved by:

PROFESSOR TECHNOLOGY CO., LTD.

5F, No.25-1, JiLin Rd., Chung-Li Industrial Park, Taoyuan 320, Taiwan.
TEL :+886-3-4551081 FAX :+886-3-4553913

Specification 規格

1.0 CONFIGURATION

1.1	RF Cable	RG174 , $\varnothing 2.5 \pm 0.05\text{mm}$ Double Shield, Black.	
		Cable Length	200mm \pm 5mm
1.2	RF Connector	SMA(Male)	

2.0 GENERAL

2.1 ENVIRONMENTAL CONDITIONS

2.1.1	Operation Temperature	-30°C to + 80°C
2.1.2	Storage Temperatur	-40°C to + 100°C
2.1.3	Relative Humidity	40% to 95%

2.2 ELECTRICAL SPECIFICATIONS

2.2.1	Input Voltage	3V~5V	
2.2.2	Power Consumption	At 3.0 V	Typ: 13mA. Max: 16mA.
		At 5.0 V	Typ: 18mA. Max: 22mA.

2.3 MECHANICAL SPECIFICATIONS

2.3.1	Mounting	Magnet mount.
2.3.2	Horizontal Pulling Force of Magnet	1.5 Kg Min.
2.3.3	Water Proof	100 % water proof.
2.3.4	Shock	10msec. Half sine wave.
2.3.5	Magnet Threshold	The antenna must stay atatched to the vehicle, at a speed of 180 km/h.
2.3.6	Housing Material	ABS (Black)
2.3.7	Weight	105g Max.
2.3.8	Dimension	See Page. 4

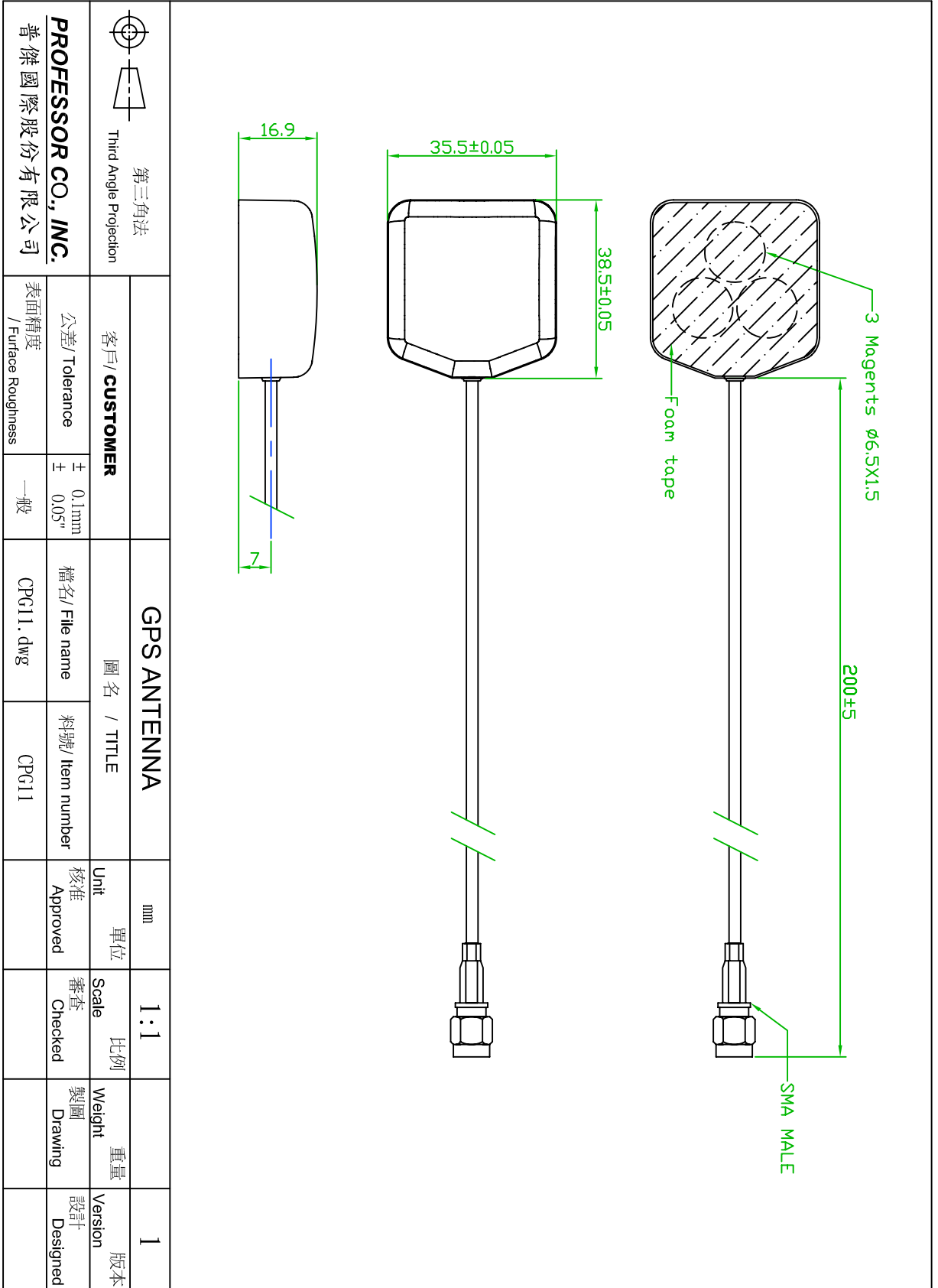
3.0 ANTENNA

3.1	Frequency Range	1575.42 \pm 1.023 MHz.
3.2	Gain	90° : 2.0 dBi Min. 20° : -5.0 dBi Min.
		Mounted on the 60mm*60mm ground plane.
3.3	Polarization	RHCP
3.4	Axial Ratio	90° : Max 3.0dB
		Mounted on the 60mm*60mm ground plane.

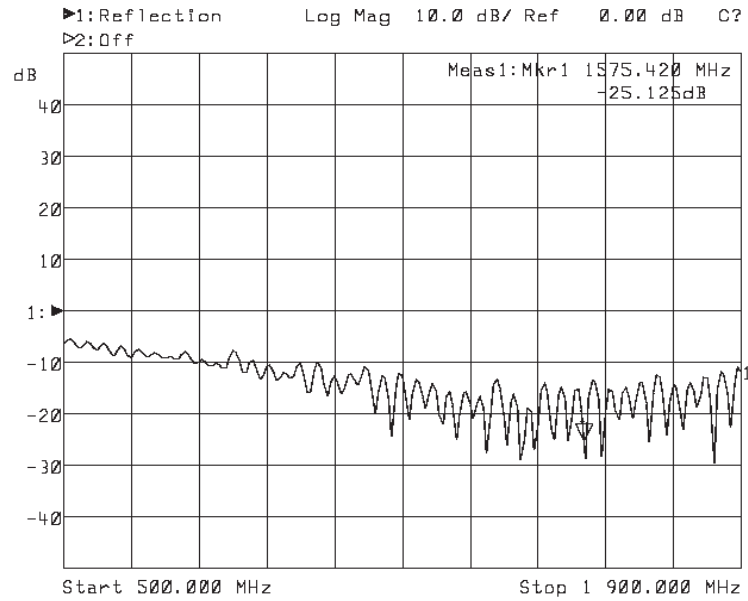
4.0 LNA

4.1	Frequency Range	1575.42 ± 1.023 MHz
4.2	Gain	28 ± 4.5dB (+25 ± 5)
4.3	Noise Figure	1.5 dB Max. (+25 ± 5) 2.2 dB Max. (+85)
4.4	Out Band Rejection	fo = 1575.42MHz fo ± 20 MHz 7dB MIN fo ± 30 MHz 12dB MIN fo ± 50 MHz 20dB MIN fo ± 100 MHz 30dB MIN
4.5	Output Impedance	50
4.6	Output VSWR	2.0 Max

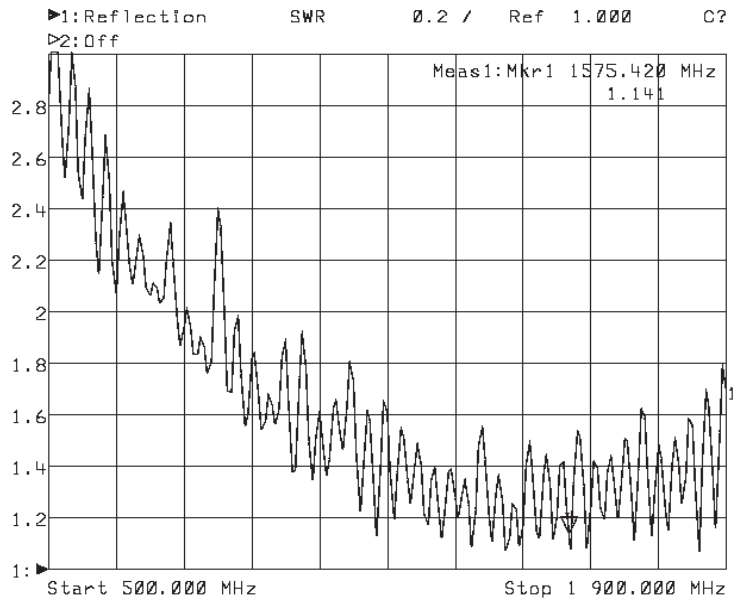
OUTLAY
外觀圖



Antenna Pattern 測試圖

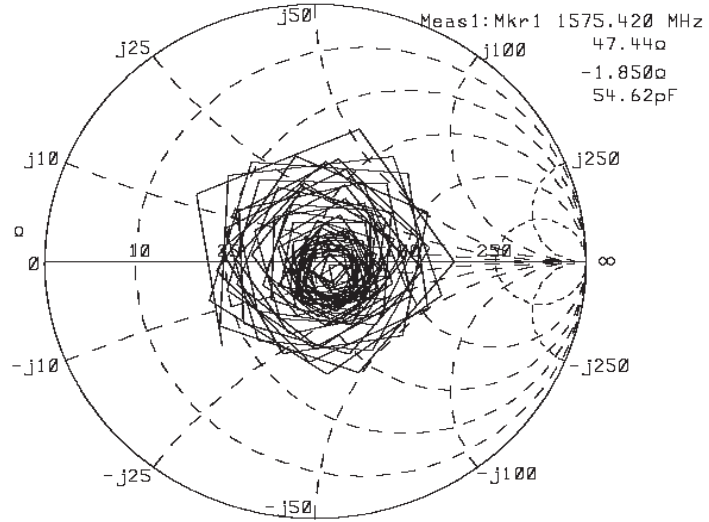


1: Mkr (MHz)	dB	2: Mkr (MHz)	dB
1> 1575.4200	-25.125		



1: Mkr (MHz)	dB	2: Mkr (MHz)	dB
1> 1575.4200	1.141		

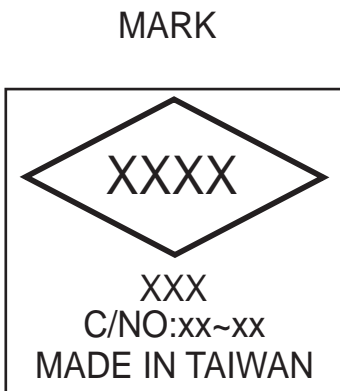
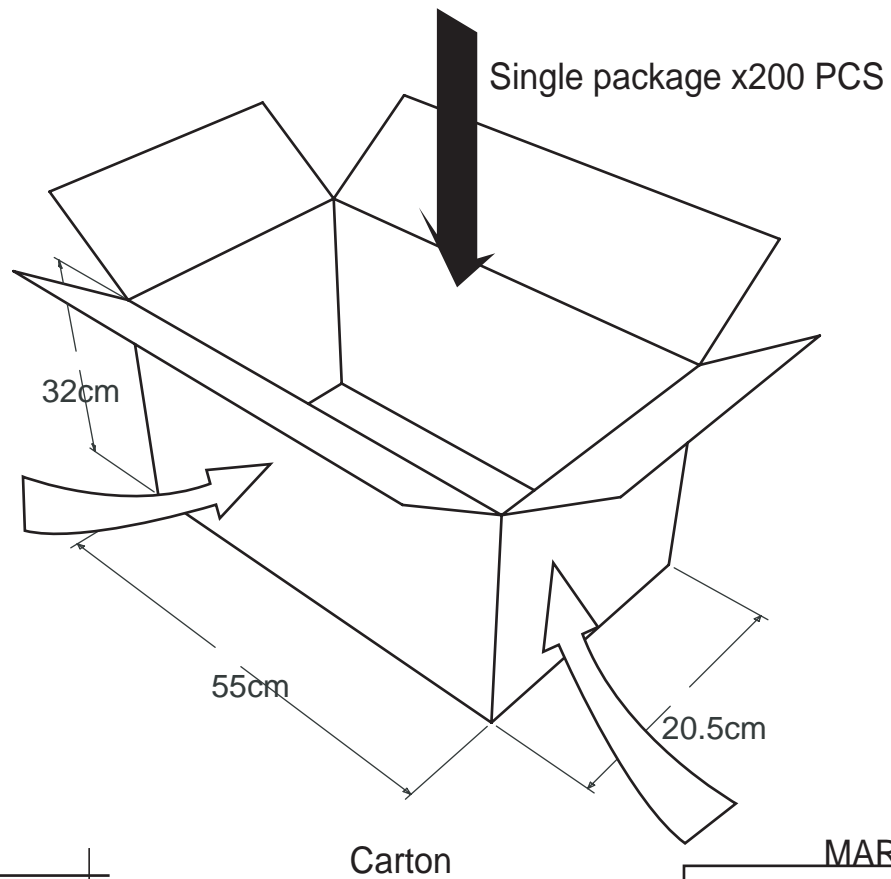
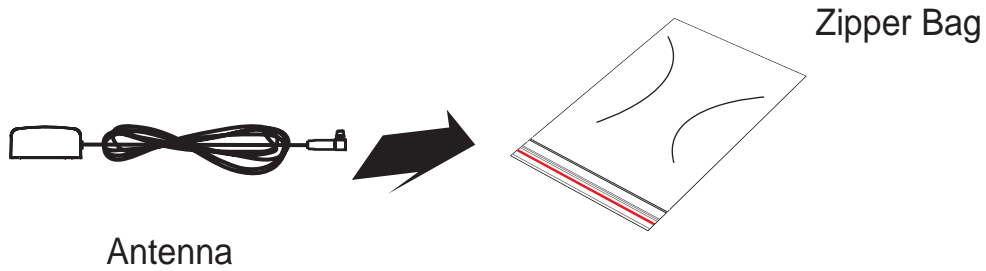
►1: Reflection Smith 1 U FS C?
 ▷2: Off



Start 500.000 MHz Stop 1 900.000 MHz

1: Mkr (MHz)	Ohm	Ohm	2: Mkr (MHz)	dB
1> 1575.420	47.44	-1.850		

Carton Packaging Construction 外箱包裝



MARK

Item	:CPG11H
Q'ty	:200PCS
N.W.	:14.9Kg
G.W.	:15.6Kg
Meas.	:55cmx20.5cmx32cm

Quantity Master Carton	200PCS
N.W. Master Carton	14.9Kg
G.W. Master Carton	15.6Kg